

Contact us for more information on our other products



Car Parks



Lobbies



Living Area

Samson International PLC.

No. 110, Kumaran Rathnam Road, Colombo 02, Sri Lanka.

Tel. : +94 11 4728870

Mobile : +94 77 7815076

Fax : +94 11 2440890

E-mail : lalithj@dsisamson.com / info@samsonint.com

Web : www.samsonint.com / www.dsi.lk

Factory :

Akuressa Road, Bogahagoda,
Galle, Sri Lanka.

Tel. : +94 91 4933945 / 6 / 7, 3783783

Fax : +94 91 2224036

E-mail : info@samsonint.com

Web : www.samsonint.com



Home Decor



Theater & Restaurant



Sports & Recreational



Rubber Flooring



Contents	P.
Rubber Flooring	01
Company Profile	02
Quality Certifications	03
GG - Smooth Surface with Chips	04
GN - Smooth Large Round Stud	04
GU - Smooth Surface	05
HG - Hammerblow Surface with Chips	05
HU 2 - Hammerblow Surface 2.5 mm	06
HU 3 - Hammerblow Surface 3.5 mm	06
KN - Medium Round Stud	07
MN - Small Round Stud	07
QN - Square Studs	08
SBP - Sportboden Puzzle	08
SB 6 - Sports and Recreational Flooring	09
SB 12 - Orange Peel Surface	09
SGN - Combination Stair tread, Nosing and Riser	10
SR - Ice Skating Rink Flooring	10
Disadvantages of Synthetic Flooring	11
Colour Chart	11
Other Products	12
Sales Network	12

Rubber Flooring

The Rubber Flooring Tile is an environmental friendly product free of CFC, PVC, Cadmium and several other harmful substances. The product comes in different sizes and designs such as Plain, Round Stud, Square Stud, Hammer Blow & Orange peel, etc. The rubber flooring tiles are designed to be installed as a permanent flooring solution which could be overlaid on existing flooring.

The springy quality of the rubber flooring tile makes it easy to walk, stand, and work on. It also reduces the risk of injuries which can be caused by standing on hard flooring for extended periods of time. Rubber flooring is specifically designed for the purpose of easing the strain on the feet and legs, and is also called as "Anti-Fatigue flooring".

Rubber flooring is also a static control method, due to its non conductive properties. Static control floors are often installed on floors which deal with electronic items and equipment, as static electricity can damage or ruin electronic components.

Advantages

- Environment Friendly
- No PVC, Plastizers, Formaldehyde
- No Asbestos, Cadmium, CFC's
- Low level of toxicity
- Chlorine free
- Can be dumped on landfill
- Can be recycled with special facilities
- Noise reduction
- Durable
- Hygienic
- Sound absorbent
- Extra heavy duty
- Underfoot comfort
- Ease of Maintenance
- Permanently resilient
- Wear & abrasion resistant
- Cigarette Burn Resistant
- Inherently Slip Resistant
- 10 year Warranty
- Designer Colours
- Hard Wearing
- Odourless
- PVC free
- Moduler

Company Profile



Name	Samson International PLC	
Legal Form	A Private Limited Company Incorporated in Year 1988 Converted as Public Quoted with Limited Liability Company in 1992	
Company Registration No.	PQ 192	
Corporate Office	No. 110, Kumaran Rathnam Road, Colombo 02, Sri Lanka Tel : +94-11-232 0978, +94-11-472 8800 E Mail : info@dsisamson.com Fax : +94-11-244 0890 Web : www.dsi.lk	
Factory Location	Akuressa Road, Bogahagoda, Galle, Sri Lanka Tel : +94-91-4933945/ 6/ 7, +94-91-3783783 E Mail : info@samsonint.com Fax : +94-91-2224036 Web : www.samsonint.com	
No of Employees	300	
Contact Person	Director International Marketing- Mr. Lalith Jayawardena - lalithj@dsisamson.com Manager - Marketing - Mr. Navindra Kumara - navindrak@samsonint.com Assistant Manager - Marketing - Mr. Sanjeewa Weerakkodi- sanjeewaw@samsonint.com	
Present Annual Capacity	Rubber MT 3,250	
Products	Natural Rubber Hot Water Bottle Power Web (Exercise web) & Exercise Bars Rubber Floorings (Floor Mats) Rubber Mats - Industrial, Sports & Domestic Type Extruded Rubber Profiles and Beadings Jar Sealing Rings, Can Sealing & Bottle caps Garden Hose, irrigation Hose & Industrial Hoses Technical / Industrial Rubber Products	Rubber Bath Mat Rubber Bands Truck Mud Flaps Road Humps (Speed Humps) Rubber Dock Bumpers Rubber Washers & Gaskets Automotive Rubber Products Customized Rubber Products
Special Achievements	Export Awards 2011-Gold Award Export Awards 2007-Silver Award Export Awards 2005-Bronz Award Export Awards 2003-Silver Award Organized by National Chamber of Exporters of Sri Lanka Sri Lanka Enterpreneur of the year 2000 - Provincial Bronze Award Organized by Federation of Chambers of Commerce & Industry of Sri Lanka	
Trade Affiliations	Member Company of DSI Samson Group Sanger GMBH, Germany	
Memebership in Association	Member of National Chamber of Exporters of Sri Lanka Member of Ceylon National Chamber of Industries of Sri Lanka Member of Ceylon Chamber of Commerce of Sri Lanka	
Bankers	Bank of Ceylon PLC	Hatton National Bank PLC
Quality Certification	ISO 9001 : 2008 Quality Management System British Standard (BS 1970:2006) TUV Certification FSC Certification	



A member of
DSI Samson group



Quality Certifications



Test	Standard
Hardness	ISO 7619
Tear strength	ISO 34-1
Colour fastness to artificial light	EN 20 105
Thickness	EN 428
Dimensional / Tensional stability	EN 434
Reaction to fire	EN 13 501
Cigarette burn resistance	EN 1399
Flexibility	EN 435
Dynamic coefficient of friction	EN 13 893
Residual / Individual indentation	EN 433
Abrasion resistance (at 5 N load)	ISO 4649
Classification	EN 685
Improvement in footfall sound absorption	ISO 140-8
Effect of chemicals	EN 423
Electrical propensity when walked upon	EN 1815
Effect of a castor chair	EN 425



GG

Smooth Surface with Chips

Features

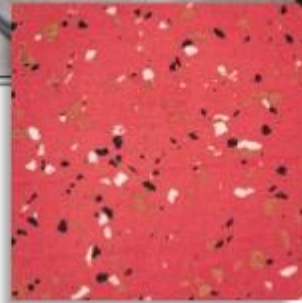
- PU surface coating
- Distinct terrazzo effect
- Optimum wheeling capability

Common Uses

- Theatres and Restaurants
- Libraries and Museums
- Recreation Centres
- Sporting Facilities
- Canteens
- Lobbies
- Hotels



Select your own combinations from colour chart (page No. 11) Simply choose any colour as a base and add 1, 2 or 3 accents as demonstrated here.



Tile Size 1000 mm x 1000 mm

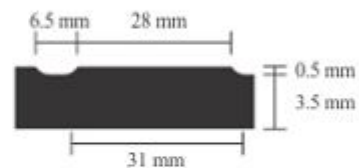


Smooth Large Round Stud

GN



Tile Size - 1008 mm x 1008 mm



Common Uses

- Showrooms
- Shopping Malls
- Ramps and Aero Bridges
- Corridors and walkways
- Transport Terminals
- Public Transport
- Airports

Select your colour from colour chart (page No. 11)

Smooth Surface GU



Features

Monocolour, Smooth Surface
Excellent Slip resistance
Optimum wheeling capability

Common Uses

Store Rooms
Laboratories
Corridors
Hospitals
Airports
Schools
Shops

Select your colour from
colour chart (page No. 11)



Tile Size 1000 mm x 1000 mm

HG Hammerblow Surface with Chips

Features

Elastic rubber floor covering
Non-geometric granule design
Excellent sound absorption
Low abrasion values

Common Uses

Transport Terminals
Store Rooms
Laboratories
Corridors
Schools
Airports
Foyers
Shops



Tile Size - 500 mm x 500 mm



Select your own combinations from colour chart (page No. 11) Simply choose any colour as a base and add 1, 2 or 3 accents as demonstrated here.

HU 2 Hammerblow Surface 2.5 mm

Features

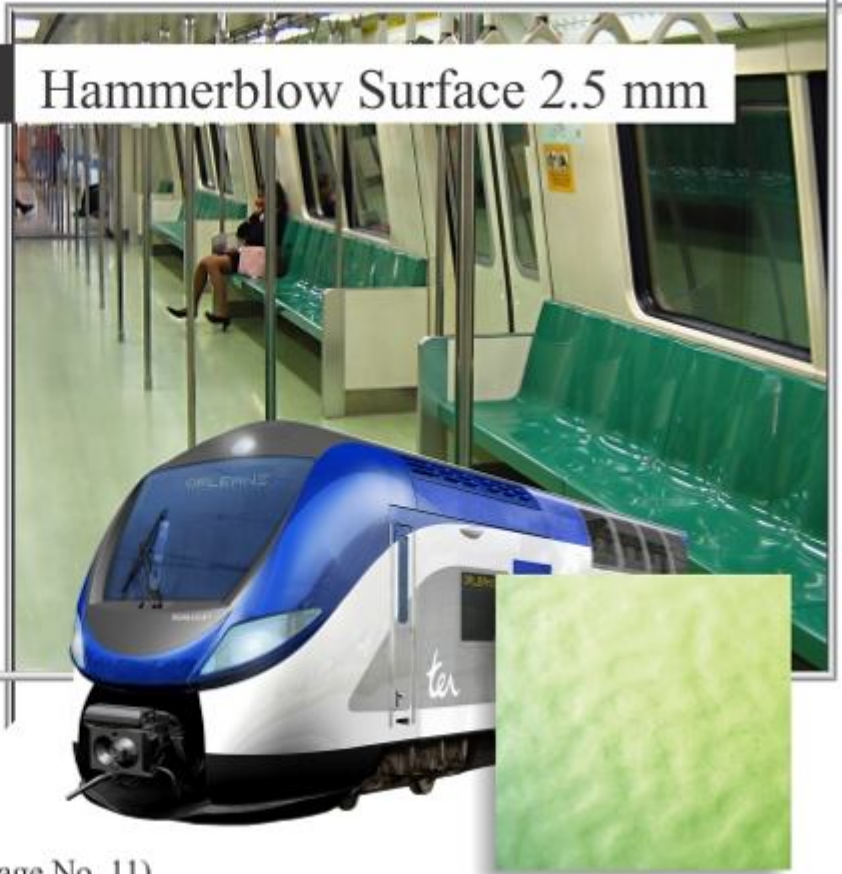
Uni colour, hammerblow surface
Reflection free
Excellent sound absorption
low abrasion values

Common Uses

Public Transport
Change Rooms
Canteens
Airports
Schools
Shops



Select your colour from colour chart (page No. 11)



Tile Size - 500 mm x 500 mm

Hammerblow Surface 3.5 mm

HU 3

Features

Uni colour, hammerblow surface
Reflection free
Excellent sound absorption
low abrasion values

Common Uses

Hotels / Casinos
Public Buildings
Sport Facilities
Showrooms
Lift Lobbies
Theatres
Libraries
Banks

Select your colour from colour chart
(page No. 11)



Tile Size - 1000 mm x 1000 mm



Medium Round Stud KN

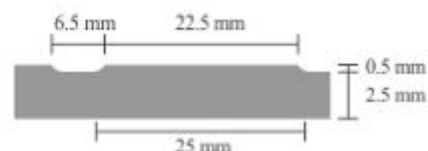


Tile Size - 500 mm x 500 mm

- * Optional - Oil & Grease resistant properties
- Select your colour from colour chart (page No. 11)

Common Uses

Food Processing areas
Schools / Universities
Commercial Kitchens
Public Transport
Service Stations
Display Floors
Aero Bridges
Laboratories
Showrooms
Car Parks
Shops



MN Small Round Stud

Features

Low stud height
Easy to clean

Common Uses

Commercial Kitchens
Food Processing
Service Stations
Rumpus Rooms
Gaming Rooms
Change Rooms
Police Stations
Laboratories
Car Parks
Canteens
Toilets

Tile Size - 500 mm x 500 mm



Select your colour from colour chart (page No. 11)



QN

Square Stud

Common Uses

Food Processing areas
Schools / Universities
Commercial Kitchens
Public Transport
Service Stations
Display Floors
Aero Bridges
Laboratories
Showrooms
Car Parks
Shops

Tile Size - 500 mm x 500 mm



* Optional - Oil & Grease resistant properties
Select your colour from colour chart (page No. 11)



Sportboden Puzzle

SBP

Features

Orange peel surface
Interlocking Tile
with puzzle edge

Common Uses

Sporting Facilities
Court Protection
Ice Rinks



Tile Size - 450 mm x 450 mm

Select your colour from colour chart
(page No. 11)



Sports and Recreational Flooring

SB 6



Tile Size - 1000 mm x 1000 mm

Features

Orange peel surface
Underside smooth
Sanded

Common Uses

Aerobics
Gymnasiums
Weight Training



Select your colour from colour chart (page No. 11)

SB 12

Orange Peel Surface

Features

Orange peel surface
Underside with knobs

Common Uses

Weight Lifting
Equestrian



Tile Size - 500 mm x 500 mm

Select your colour from colour chart (page No. 11)

SGN

Combination Stair Tread, Nosing and Riser

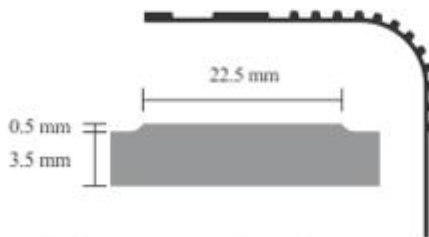


Common Uses

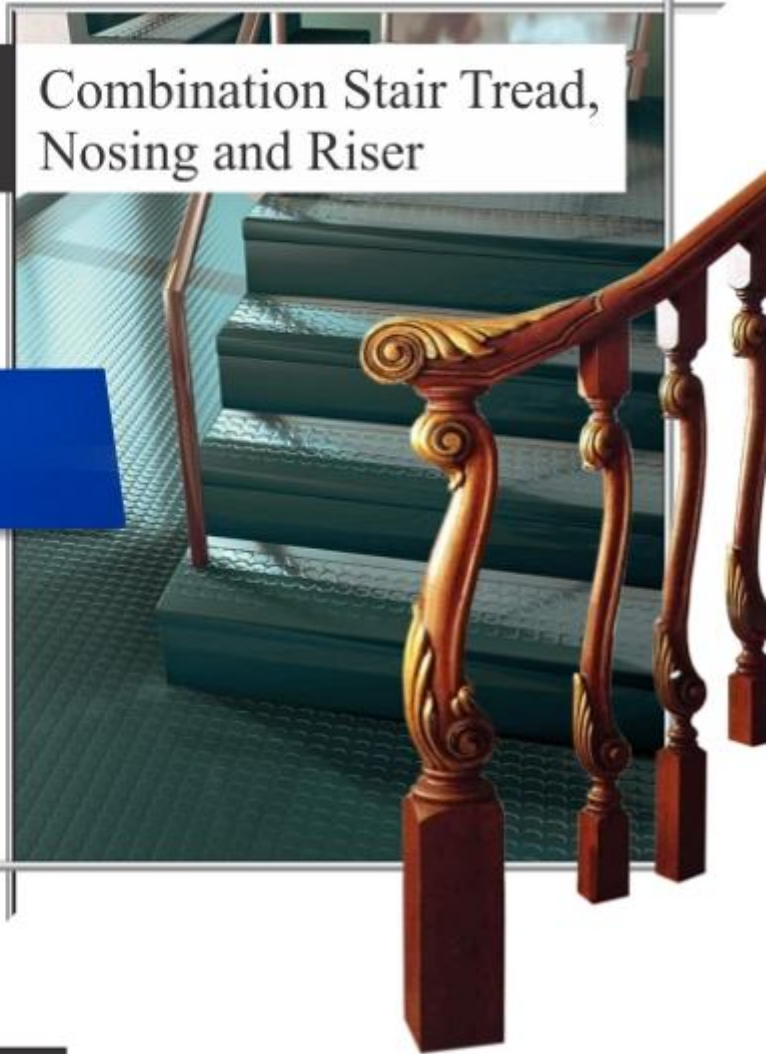
Stairways

Any stairway with

- round corners
- Concrete
- timber
- metal



Select your colour from colour chart (page No. 11)



Ice Skating Rink Flooring

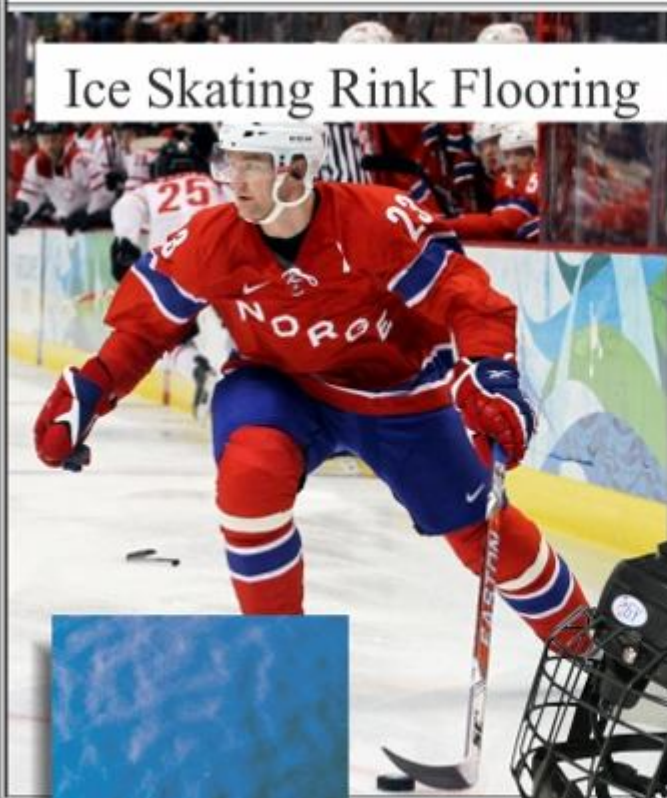
SR

Features

- Uni colour, hammerblow surface
- Reflection free
- Excellent sound absorption
- low abrasion values

Common Uses

- Ice Skating Floors
- Ice Hockey Grounds



Tile Size - 1000 mm x 1000 mm

Select your colour from colour chart (page No. 11)

Disadvantages of Synthetic Flooring

- 1) The coveted shine of Synthetic flooring will eventually fade off with wear.
- 2) Synthetic flooring or coating begins to deteriorate quickly. Peeling, blemishing sooner than expected.
- 3) You need to eliminate all cracks and chips of the floor patches before applying synthetic coating. Even though slight or minor patches will be appeared and dirt will still stand out.
- 3) Synthetic floorings don't breathe. Moisture can be trapped beneath the surface. Before applying synthetic flooring or synthetic coating have your concrete tested for a moisture vapour emission rate. If it is too high the synthetic coating can delaminate.
- 4) Chemicals and automotive fluids will corrode the synthetic coating on the floor and cause blemishes and bubbles.
- 5) Tires may pull up the synthetic flooring (in car parks).

Colour Chart



* RAL colours mentioned are only intended for information purposes. Colour swatches or original colour swatch book are available upon request.
* Due to printing limitations there may be variations between the colours of the actual flooring and illustrations shown in this catalog.

Other Products

- Rubber Hot Water Bottles
- Flex Bars & Power Webs
- All kinds of Rubber Mats (Industrial, Households, Sports etc.)
- Rubber Beadings & Profiles
- Trucking Industry Accessories (Mud Flaps, D-Bumpers, Truck Strings etc.)
- Garden & Irrigation Hoses
- Air Hoses, Heater Hoses & Fuel Hoses
- All kinds of Rubber Bands, Rings, Gaskets etc.
- Household Rubber Items (Sink Cleaners, Door Wedges, Door Stoppers etc.)
- Solid Tires
- Rubber Health Slippers

Any sort of customer tailor made Rubber Products



Sales Network

